



PARMA 17

AERIAL TRAILER MOUNTED PLATFORM ARTICULATED AND TELESCOPIC, FOR WORKING HEIGHTS UP TO 17 METER (55,70 FEET)

STANDARD MODEL:

- * 230V main power
- * Visual level for stabilisation
- * Ball Coupling with inertia brake
- * Aluminium Basket (1.10 x 0.60) m
- * Hydraulic stabilizers
- * Proportional controls
- * Emergency lowering from the ground
- * 90° jib for better aerial access



Management System
ISO 9001:2008
www.tuv.com
ID 9105060482

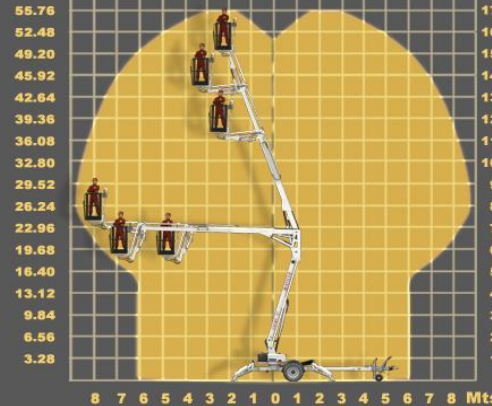


PARMA 17



PARMA 17

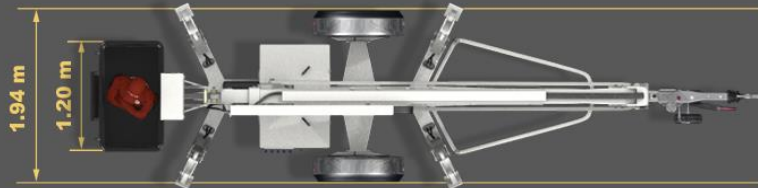
Feet



0.75 m

2.28 m

7.27 m



1.94 m

1.20 m



360°



4.53 m

4.53 m



2.400

200 kg

Optional accessories

- 1 Electric outlet in basket
- 2 Descent buzzer
- 3 Rotating light
- 4 Spare wheels
- 5 Lighting kit for roads
- 6 Hour meter
- 7 Bi energy: 230V + Gasoline Engine
- 8 Bi energy: 230V + Batteries
- 9 Bi energy: 230V + Diesel Engine
- 10 Batteries main power
- 11 Bi energy: Batteries + Gasoline Engine
- 12 Bi energy: Batteries + Diesel Engine
- 13 Battery charge indicator
- 14 Self driving system on wheels
- 15 Automatic self-leveling for stabilizers
- 16 Insulating basket
- 17 Aluminium basket 1,9m + basket load device
- 18 Control weight in the basket
- 19 Emergency lowering from the basket
- 20 Hydraulic basket rotation 145°
- 21 Support pads (40 x 35)cm
- 22 Stabilizer for ball and ring coupling
- 23 Ring coupling